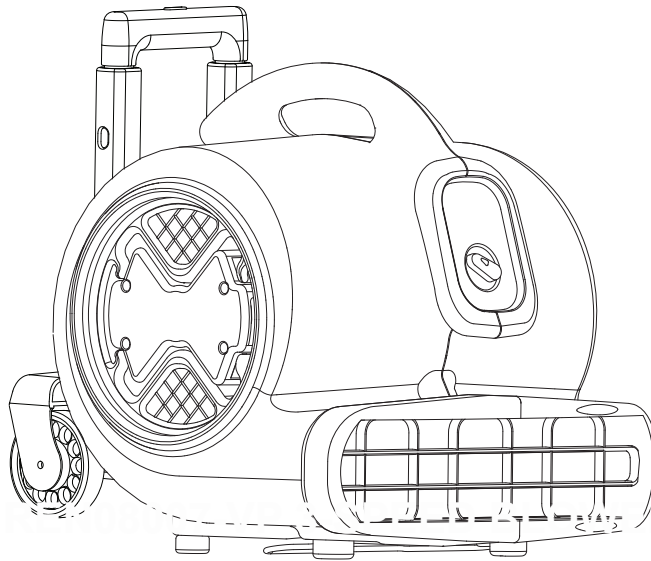


# 3-SPEED AIR MOVER

# OWNERS MANUAL

IMPORTANT: READ OWNERS MANUAL CAREFULLY

Please fill out and return your warranty card!



**MODEL # RACER, TPRACER**

## TABLE OF CONTENTS

	Page
Safety Precautions .....	A-2
Machine Operation /Daisy Chain.....	A-3
Maintenance /Storage .....	A-3
Parts List.....	D-2 – D-3
Wiring Diagram.....	D-3

## SAFETY PRECAUTIONS

All operators shall read, understand and exercise the following safety precautions:

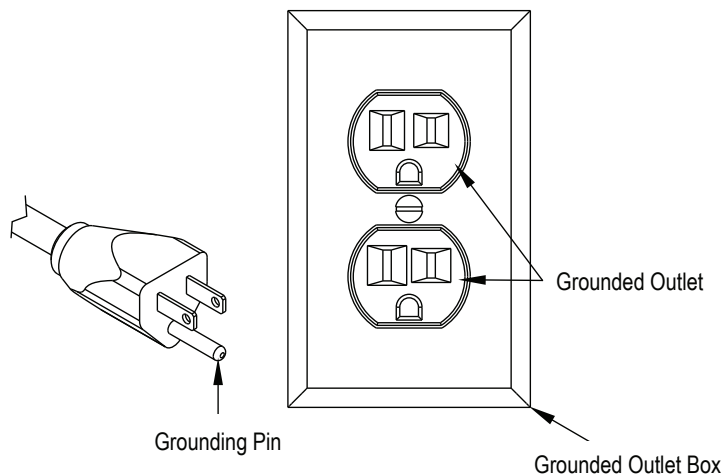
- 1) Do not operate machine:
  - Unless trained and authorized.
  - Unless you have read and understand the operators manual.
  - Inflammable or explosive areas.
  - With a damaged cord or plug.
  - If not in proper operating condition.
  - In outdoor areas.
  - In standing water.
  - With the use of extension cords.
- 2) Before operating machine:
  - Make sure all safety devices are in place and operate properly.
- 3) When using machine:
  - Do not pull machine by cord or plug.
  - Do not pull cord around sharp edges or corners.
  - Do not unplug machine by pulling on the cord.
  - Do not stretch cord.
  - Do not handle plug with wet hands.
  - Keep cord away from heated surfaces.
  - Report machine damage or faulty operation immediately.
- 4) Before leaving or servicing machine:
  - Turn off machine.
  - Unplug cord from outlet.
- 5) When servicing machine:
  - An experienced technician should only perform service work.
  - Unplug cord from outlet.
  - Use manufacturer supplied or approved replacement parts.

## GROUNDING INSTRUCTIONS

General – This air mover shall be grounded while in use to protect the operator from electrical shock. The machine is provided with a three – conductor cord and a three – contact grounding type attachment plug to fit the proper grounding type receptacle. The green (or green & yellow) conductor in the cord is the grounding wire. Never connect this wire to anything other than the grounding pin of the attachment plug.

This machine is for use on a nominal 120 – volt circuit and has a grounding plug that resembles the plug illustrated in the figure below. Make sure that the machine is connected to an outlet having the same configuration as the plug. No adapter should be used with this machine.

This machine is intended for commercial use only. It is constructed for use in an indoor environment and is not intended for any other use.



## BASIC OPERATION

- 1) Check the machine for any obstructions in fan prior to operation.
  - If an item blocks the intakes of the air mover, this will hurt the performance of the machine, and could cause the motor to overheat.
- 2) Adjust machine to desired position for operation by pulling it back to its preset height adjustments.
- 3) Plug power cord into a grounded outlet.
  - Do not use an extension cord in conjunction with the standard power cord.
- 4) This machine has 3 power settings. Turn the power knob to the desired speed.
  - Low = 1 Med = 2 High = 3.
- 5) To stop the machine at any time, simply turn the power knob to the "off" position.
  - Never stick any object into the air inlet vents or the air outlet vent.

## DAISY CHAIN

The 3-Speed Air Mover can be connected in a "Daisy Chain" allowing for two (2) additional units to work together on one circuit.

- Only use 3-Speed Air Mover units together in the daisy chain.

NOTE: The 3-Speed Air Mover has an onboard circuit breaker. If the auxiliary outlet overloads, the circuit breaker will trip. If the breaker trips, unplug the units and press the circuit breaker reset button. Plug the units back into the power source and turn on the switch.



## MAINTENANCE

To keep this machine performing well for many years, please follow the following maintenance procedures:

**Always confirm the machine is unplugged from the power source prior to performing any maintenance or repairs!**

- 1) Unplug machine as soon as you are done using it.
- 2) Wrap the power cord around the carrying handle.
- 3) Check power cord for any damage. If any damage is detected, replace the cord immediately.
- 4) Lubricate the handle assembly and wheels with a water resistant lubricant every month.
- 5) Check machine for loose or missing nuts and bolts, and replace as necessary.
- 6) Clean the outside of the machine with a mild cleaner.

## AIR MOVER STORAGE

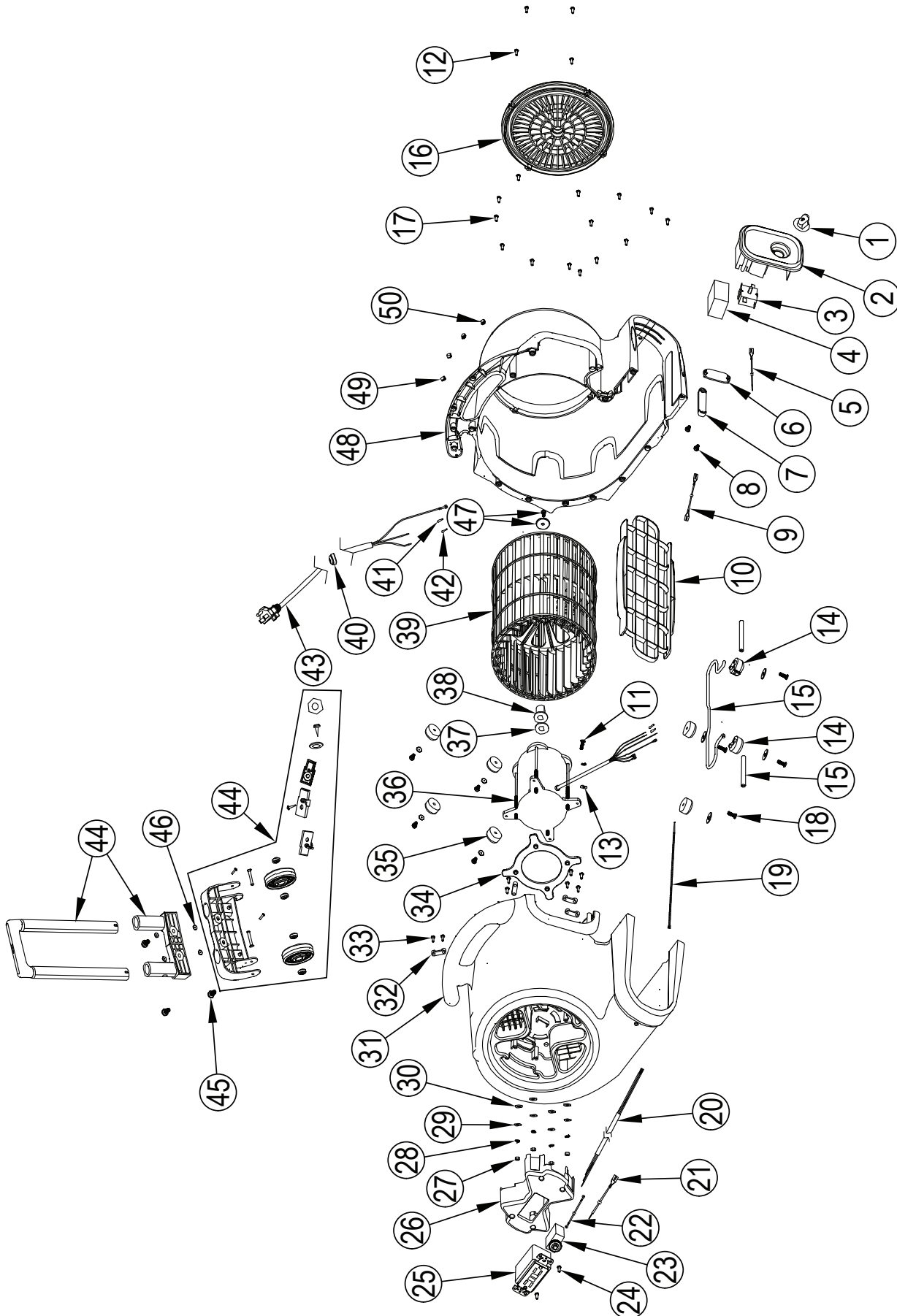
Air Movers can be stacked (up to 4) on their sides for storage.

### NOTICE:

- 1) Stacking feature is not secure for transportation.
- 2) Remove the filters before stacking.



## 3-SPEED AIR MOVER



## 3-SPEED AIR MOVER

Item	Ref. No.	Qty	Description	Item	Ref. No.	Qty	Description
1	XP600-001	1	Knob, On / Off	25	XP600-025	1	Receptical, Gfci
2	XP600-002	1	Switch Plate	26	XP600-026	1	Vent, Cover (Motor Side)
3	XP600-003	1	Switch Assembly	27	XP600-027	4	Nut, M5
4	XP600-004	1	Capacitor	28	XP600-028	5	Spring Washer, M5
5	XP600-005	1	Male, Lead (Switch)	29	XP600-029	12	Washer, Flat
6	XP600-006	1	Control Switch Clip	30	XP600-030	4	Washer, Heat Insulation
7	XP600-007	1	Capacitor Clip	31	XP600-031	1	Housing, Left
8	XP600-008	4	Screw, 3.5 X 12, Pan Head	32	XP600-032	4	Cable Clip, #2
9	XP600-009	1	Female End Lead (Switch)	33	XP600-033	8	Screw, Self-Tapping, St4 X 12
10	XP600-010	1	Vent, Front Outlet	34	XP600-034	1	Plate, Heat Insulation
11	XP600-011	1	Screw, M5 X 6, Pan Head	35	XP600-035	1	Rubber Feet (Set Of 6 Pcs)
12	XP600-066	1	Screw, Self-Tapping St5 X 12	36	XP600-067	1	Motor Assembly Kit
13	XP600-013	1	Lockwasher, Countersink	37	XP600-037	1	Washer, D-Shaped
14	XP600-068	1	Rubber Foot-Left and Right	38	XP600-038	1	Bushing
15	XP600-069	1	Kick Stand Assembly Kit	39	XP600-039	1	Fan Wheel
16	XP600-065	1	Vent, Cover (Fan Side)	40	XP600-040	1	Cord Strain Relief
17	XP600-064	21	Screw, Self-Tapping, St4 X 16	41	XP600-041	2	Closed-End Terminal (C4)
18	XP600-018	8	Screw, Self-Tapping, M5 X 20	42	XP600-042	3	Closed-End Terminal (C5)
19	XP600-019	1	Nylon Tie	43	XP600-043	1	Power Cord
20	XP600-020	1	Lead Wire, Switch	44	XP600-070	4	Handle Assembly Kit
21	XP600-021	1	Lead Wire, Circuit Breaker	45	XP600-051	4	Screw, Pan Head, M6 X 20
22	XP600-022	1	Ground Wire (Gfci)	46	XP600-054	4	Washer, Flat, 6.4
23	XP600-023	1	Circuit Breaker, 12a	47	XP600-071	1	Washer and Screw-Fan Assembly
24	XP600-024	2	Screw, Self-Tapping, M3 X 6	48	XP600-061	1	Housing, Right
				49	XP600-062	2	Hole Plug #2
				50	XP600-063	2	Hole Plug #1

## WIRING DIAGRAM

